

# Stopping Plugs Made of Metal Series 8292



www.stahl.de



- > For Ex e and Ex d enclosures
- > Versions
  - Metric
  - NPT
- > Thread sizes
  - M16 ... M100
  - 3/8" ... 4" NPT

14501E00



The stopping plugs of Series 8292 are suitable for sealing unused bores in enclosures of type of protection "increased safety". They have been manufactured in impact-resistant design according to IEC/EN 60079-0 and IEC/EN60079-1.

	ATEX / IECEx					
Zone	0	1	2	20	21	22
For use in		x	x		x	x

### Explosion Protection

#### Global (IECEx)

Gas and dust | IECEx SIR 10.0160 X  
 Ex d IIC  
 Ex e II  
 Ex d I  
 Ex e I  
 Ex tD A21 IP6X

#### Europe (ATEX)

Gas and dust | Sira 10 ATEX 1313 X  
 II 2 G Ex d IIC  
 II 2 G Ex e II  
 II 2 G Ex d I  
 II 2 G Ex e I  
 II 2 D Ex tD A21 IP6X

#### Certifications and certificates

Certificates | IECEx, ATEX, Russia (GOST R), Belarus (operating licence)

E10

WebCode 8292A

# Stopping Plugs Made of Metal

## Series 8292

### Technical Data

#### Ambient conditions

Operation temperature | -60 ... +200 °C

#### Mechanical data




Degree of protection

IP66

Material

Brass, nickel-plated brass, stainless steel (316L)

### Selection Table



Version	Thread size	Dimensions [mm]						Order number	Weight kg
		B	D	b	d	L	A/F		
Stopping plug, NPT, hexagon socket, brass   <small>14491E00</small>	3/8" NPT	20	17	--	--	15	10	<b>8292/11-BS-3/8" NPT</b>	0.150
	1/2" NPT	25	22	10	12	20	10	<b>8292/11-BS-1/2" NPT</b>	0.100
	3/4" NPT	25	27	10	18	26	10	<b>8292/11-BS-3/4" NPT</b>	0.125
	1" NPT	30	34	15	25	16	10	<b>8292/11-BS-1" NPT</b>	0.150
	1 1/4" NPT	30	42	15	32	26	10	<b>8292/11-BS-1 1/4" NPT</b>	0.150
	1 1/2" NPT	31	49	16	39	26	10	<b>8292/11-BS-1 1/2" NPT</b>	0.150
	2" NPT	32	61	17	49	27	14	<b>8292/11-BS-2" NPT</b>	0.200
	2 1/2" NPT	45	73	30	57	39	14	<b>8292/11-BS-2 1/2" NPT</b>	0.200
	3" NPT	46	89	31	73	39	14	<b>8292/11-BS-3" NPT</b>	0.250
	3 1/2" NPT	48	102	33	86	42	14	<b>8292/11-BS-3 1/2" NPT</b>	0.275
4" NPT	49	115	34	99	43	14	<b>8292/11-BS-4" NPT</b>	0.300	
Stopping plug, NPT, hexagon socket, nickel-plated brass   <small>14529E00</small>	3/8" NPT	20	17	∅ ∅	∅ ∅	15	10	<b>8292/11-BN-3/8" NPT</b>	0.150
	1/2" NPT	25	22	10	12	20	10	<b>8292/11-BN-1/2" NPT</b>	0.100
	3/4" NPT	25	27	10	18	20	10	<b>8292/11-BN-3/4" NPT</b>	0.125
	1" NPT	30	34	15	25	25	10	<b>8292/11-BN-1" NPT</b>	0.150
	1 1/4" NPT	30	42	15	32	26	10	<b>8292/11-BN-1 1/4" NPT</b>	0.150
	1 1/2" NPT	31	49	16	39	26	10	<b>8292/11-BN-1 1/2" NPT</b>	0.150
	2" NPT	32	61	17	49	27	14	<b>8292/11-BN-2" NPT</b>	0.200
	2 1/2" NPT	45	73	30	57	39	14	<b>8292/11-BN-2 1/2" NPT</b>	0.200
	3" NPT	46	89	31	73	42	14	<b>8292/11-BN-3" NPT</b>	0.250
	3 1/2" NPT	48	102	33	86	43	14	<b>8292/11-BN-3 1/2" NPT</b>	0.275
4" NPT	49	115	34	99	43	14	<b>8292/11-BN-4" NPT</b>	0.300	
Stopping plug, NPT, hexagon socket, stainless steel   <small>14529E00</small>	3/8" NPT	20	17	∅ ∅	∅ ∅	15	10	<b>8292/11-SS-3/8" NPT</b>	0.150
	1/2" NPT	25	22	∅ ∅	∅ ∅	20	10	<b>8292/11-SS-1/2" NPT</b>	0.100
	3/4" NPT	25	27	∅ ∅	∅ ∅	20	10	<b>8292/11-SS-3/4" NPT</b>	0.125
	1" NPT	30	34	∅ ∅	∅ ∅	25	10	<b>8292/11-SS-1" NPT</b>	0.150
	1 1/4" NPT	30	42	∅ ∅	∅ ∅	26	10	<b>8292/11-SS-1 1/4" NPT</b>	0.150
	1 1/2" NPT	31	49	∅ ∅	∅ ∅	26	10	<b>8292/11-SS-1 1/2" NPT</b>	0.150
	2" NPT	32	61	∅ ∅	∅ ∅	27	14	<b>8292/11-SS-2" NPT</b>	0.200
	2 1/2" NPT	45	73	∅ ∅	∅ ∅	40	14	<b>8292/11-SS-2 1/2" NPT</b>	0.200
	3" NPT	46	89	∅ ∅	∅ ∅	42	14	<b>8292/11-SS-3" NPT</b>	0.250
	3 1/2" NPT	48	102	∅ ∅	∅ ∅	42	14	<b>8292/11-SS-3 1/2" NPT</b>	0.275
4" NPT	49	115	∅ ∅	∅ ∅	46	14	<b>8292/11-SS-4" NPT</b>	0.300	

# Stopping Plugs Made of Metal

## Series 8292




Selection Table

Version	Thread size	Dimensions [mm]							Order number	Weight
		B	D	b	d	L	E	A/F		
Stopping plug, metric, hexagon head, brass  16604E00	M16 x 1.5	24	22	22	11	15	24	22	8292/12-BS-M16x1,5	0.050
	M20 x 1.5	24	24	22	15	15	26	24	8292/12-BS-M20x1,5	0.075
	M25 x 1.5	24	30	22	20	15	33	30	8292/12-BS-M25x1,5	0.075
	M32 x 1.5	24	40	19	27	15	40	36	8292/12-BS-M32x1,5	0.100
	M40 x 1.5	24	46	19	35	15	50	46	8292/12-BS-M40x1,5	0.150
	M50 x 1.5	24	55	19	43	15	59	55	8292/12-BS-M50x1,5	0.175
	M63 x 1.5	24	70	19	55	15	76	70	8292/12-BS-M63x1,5	0.250
Stopping plug, metric / NPT, hexagon head, nickel-plated brass  11158E00	M16 x 1.5	24	22	22	11	15	24	22	8292/12-BN-M16x1,5	0.050
	M20 x 1.5	24	24	22	15	15	26	24	8292/12-BN-M20x1,5	0.075
	M24 x 1.5	24	30	18	20	15	33	30	8292/12-BN-M24x1,5	0.075
	M25 x 1.5	24	30	22	20	15	33	30	8292/12-BN-M25x1,5	0.075
	M32 x 1.5	24	40	19	27	15	40	36	8292/12-BN-M32x1,5	0.100
	M33 x 1.5	24	36	18	27	15	39	36	8292/12-BN-M33x1,5	0.100
	M40 x 1.5	24	46	19	35	15	50	46	8292/12-BS-M40x1,5	0.150
	M42 x 1.5	24	46	20	35	15	50	46	8292/12-BN-M42x1,5	0.150
	M48 x 1.5	24	54	18	41	15	60	55	8292/12-BN-M48x1,5	0.175
	M50 x 1.5	24	55	19	43	15	59	55	8292/12-BN-M50x1,5	0.175
	M56 x 1.5	24	59	19	48	15	65	60	8292/12-BN-M56x1,5	0.200
	M63 x 1.5	24	70	19	55	15	76	70	8292/12-BN-M63x1,5	0.250
	M75 x 1.5	24	80	19	70	15	86	80	8292/12-BN-M75x1,5	0.300
	M90 x 2	24	95	19	83	15	103	95	8292/12-BN-M90x2	0.350
	M100 x 2	24	108	19	93	15	117	108	8292/12-BN-M100x2	0.400
	3/8" NPT	24	19	∅ ∅	∅ ∅	15	20	19	8292/12-BN-3/8" NPT	0.150
	1/2" NPT	29	24	26	13	20	26	24	8292/12-BN-1/2" NPT	0.100
	3/4" NPT	30	30	27	18	15	33	30	8292/12-BN-3/4" NPT	0.125
	1" NPT	34	36	31	24	16	39	36	8292/12-BN-1" NPT	0.150
	1 1/4" NPT	35	55	30	28	17	59	55	8292/12-BN-1 1/4" NPT	0.150
	1 1/2" NPT	35	46	30	34	17	50	46	8292/12-BN-1 1/2" NPT	0.150
	2" NPT	36	65	31	46	27	70	65	8292/12-BN-2" NPT	0.200
	2 1/2" NPT	49	80	44	57	40	86	80	8292/12-BN-2 1/2" NPT	0.200
3" NPT	51	98	46	72	25	107	99	8292/12-BN-3" NPT	0.250	
3 1/2" NPT	52	108	47	84	37	117	108	8292/12-BN-3 1/2" NPT	0.275	
4" NPT	53	127	48	97	45	137	127	8292/12-BN-4" NPT	0.300	


## Stopping Plugs Made of Metal

### Series 8292

Selection Table

Version	Thread size	Dimensions [mm]							Order number	Weight
		B	D	b	d	L	E	A/F		
Stopping plug, metric, hexagon head, stainless steel  11158E00	M16 x 1.5	24	22	∅ ∅	∅ ∅	15	24	22	8292/12-SS-M16x1,5	0.050
	M20 x 1.5	24	24	∅ ∅	∅ ∅	15	26	24	8292/12-SS-M20x1,5	0.075
	M24 x 1.5	24	30	∅ ∅	∅ ∅	15	33	30	8292/12-SS-M24x1,5	0.075
	M25 x 1.5	24	30	∅ ∅	∅ ∅	15	33	30	8292/12-SS-M25x1,5	0.075
	M32 x 1.5	24	40	∅ ∅	∅ ∅	15	40	36	8292/12-SS-M32x1,5	0.100
	M40 x 1.5	24	46	∅ ∅	∅ ∅	15	50	46	8292/12-SS-M40x1,5	0.150
	M50 x 1.5	24	55	∅ ∅	∅ ∅	15	59	55	8292/12-SS-M50x1,5	0.175
	M56 x 1.5	24	59	∅ ∅	∅ ∅	15	65	60	8292/12-SS-M56x1,5	0.200
	M63 x 1.5	24	70	∅ ∅	∅ ∅	15	76	70	8292/12-SS-M63x1,5	0.250
	M75 x 1.5	24	80	∅ ∅	∅ ∅	15	86	80	8292/12-SS-M75x1,5	0.300
	M90 x 2	24	95	∅ ∅	∅ ∅	15	103	95	8292/12-SS-M90x2	0.350
M100 x 2	24	108	∅ ∅	∅ ∅	15	117	108	8292/12-SS-M100x2	0.400	

Selection Table

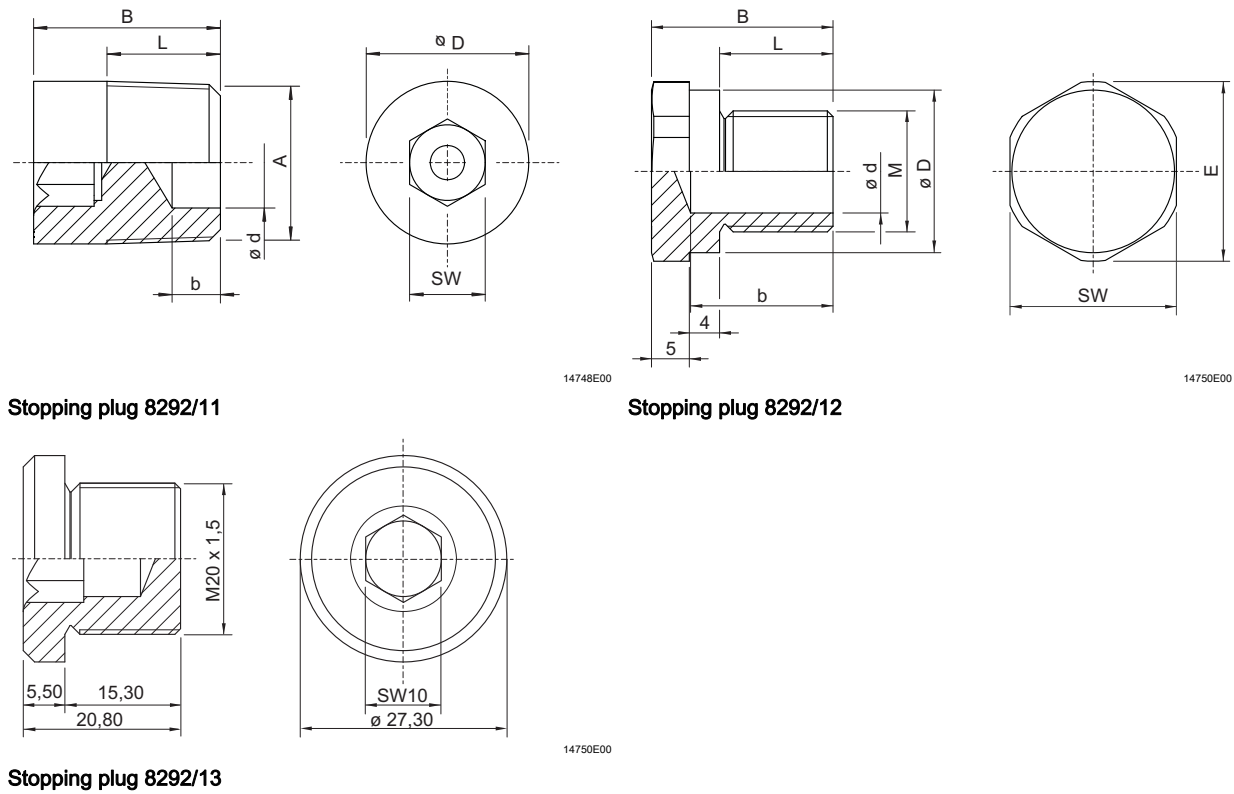
Version	Thread size	Dimensions [mm]				Order number	Weight
		B	D	L	A/F		
Stopping plug, metric, hexagon socket, nickel-plated brass  14482E00	M20 x 1.5	20.8	27.3	15.3	10	8292/13-BN-M20x1,5	0.075

# Stopping Plugs Made of Metal Series 8292



## Dimensional Drawings (All Dimensions in mm) - Subject to Alterations

Note: for the dimensions, see selection table



We reserve the right to make alterations to the technical data, dimensions, weights, designs and products available without notice. The illustrations cannot be considered binding.