

EX 4.0

THE NEXT LEVEL OF
EXPLOSION PROTECTION.



THE STRONGEST LINK.

STAHL

EC-940-AFZ
OUR NEW CAMERA DESIGN

For hazardous areas

THE NEW EC-940-AFZ

THE NEW ENCLOSURE DESIGN

Our newly designed EC-940-AFZ camera is suitable for universal use in all types of industries and applications. The latest zoom camera technology has been integrated into the Ex d camera enclosure, while the options for connecting the camera are suitably protected in the Ex e type chamber.

The advantage is that you can now connect a modern Full HD IP camera with ONVIF Profile S, 32x optical zoom and WDR function through the Ex e connection chamber directly in the hazardous area – it's as simple as that!



BOROSILICATE GLASS

Protective front made of hardened borosilicate glass

FRONT OPENING

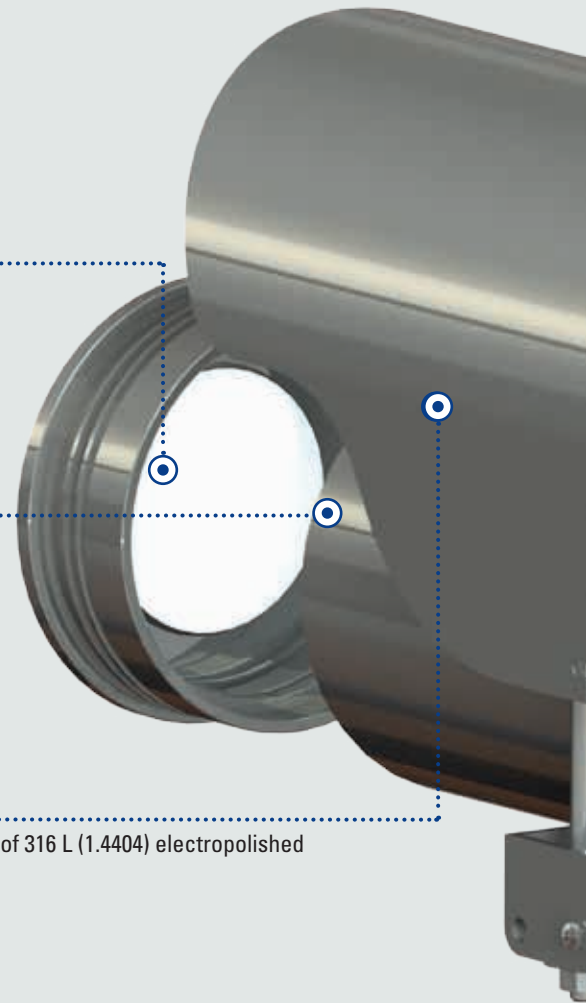
Front opening with slide-out sled assembly for easy camera adjustment

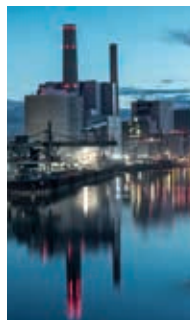
WEATHER PROTECTION

Weatherproof enclosure (IP66) made of 316 L (1.4404) electropolished stainless steel; sun shield included

PAN/TILT BRACKET

Easy to install, adjustable pan/tilt bracket





EX E CONNECTION CHAMBER

NEW

Avoids complex Ex d cable glands; installation of additional junction boxes is no longer required. The Ex e connection chamber provides short installation times with clearly defined connection points

EX E COVER

Ex e cover fully secured against falls, including captive screws

FALL ARRESTER

Camera enclosure with integrated fall arrester



THE NEW EC-940-AFZ

The new camera family includes three models, all of them designed for worldwide use and for reliable operation in ambient temperatures ranging between -55 °C and +65 °C / -67 °F and +149 °F. The camera enclosure is entirely made out of electropolished stainless steel, and therefore ideally suited for a multitude of surveillance applications in different industries – on drilling rigs, for pipeline surveillance, in refineries, tank farms, or in the chemical and pharmaceutical industries.

MAX.

-55 °C ... +65 °C
-67 °F ... +149 °F

**ATEX
IECEX
CERTIFIED**

**CAN BE USED
ALMOST
WORLDWIDE**



NEW CAMERA DESIGN COMES IN 3 VERSIONS

All of the cameras combine cost-effectiveness and ease of installation; any additional Ex e junction boxes are no longer required.



STANDARD IP VERSION

- Integrated Ex e connection chamber offers ease of installation directly in the hazardous area
- Full HD IP, WDR, defog, 32x optical zoom
- Easily maintained modular design
- 230 VAC and 24 VDC versions available



FIBRE OPTIC VERSION (additional features)

- Designed for long-distance transmission (up to 5 km / 3.1 mi) with maximum EMC protection
- Ex op is protection type enables fibre optic cable connection in the hazardous area



PoE++ Version (additional features)

- Reliable camera operation in extreme ambient temperatures (-55 °C up to +65 °C / -67 °F up to +149 °F)
- Data transmission distance of up to 150 m / 492 ft using R. STAHL's PoE++ extender
- Power over Ethernet (PoE) through just one Ethernet cable

EC-940-AFZ

THE NEW CAMERA TECHNOLOGY



FULL HD 5X SHARPER IMAGES

High definition (HD) cameras produce approximately five times sharper images than analogue cameras, thus revealing minute image details. The modern sensor technology combined with WDR (Wide Dynamic Range) imaging provides clear video images even in poor lighting conditions, with great variation in light levels.

The IP technology enables video retrieval over a network by using terminal devices such as PCs or smartphones and simplifies video analytics or video archiving.

Modern compression standards such as H.264 deliver a lower compressed bit rate for the same excellent video image quality.

GLOBAL IP INTERFACE STANDARD

ONVIF (Open Network Video Interface Forum) is an open industry forum for the development of a global standard for the interface of IP-based physical security products; the ONVIF Profile S has been specially developed for IP-based video systems. The ONVIF specification ensures interoperability between network video

products regardless of manufacturer. It defines a common protocol for the exchange of information between network video devices including automatic device discovery and video streaming. ONVIF allows us the seamless integration of our IP cameras into video surveillance networks worldwide.

WDR – PROVIDES THE FULL SCENE CONTENT

Wide Dynamic Range technology assimilates information from extreme light levels and combines them into a single scene. The principle: each image is captured with multiple exposure times, so that bright or dark parts of the image are captured with optimal short or long exposures.

For example, a dark background requires a longer exposure time, while a bright foreground requires a shorter exposure time. The digital camera produces clear images, combining them into one frame and thus showing the full content of the scene.

DEFOG – HAZE AND FOG REDUCTION

Outdoor cameras often have to withstand adverse weather conditions or unfavorable atmospheric conditions. Fog, mist, smog or smoke may considerably affect image quality, often beyond recognition. The defog feature analyzes the uncompressed video

signal pixel by pixel. Color, contrast and sharpness of the optical signal are then retouched, and the camera provides clear images of objects or people even in difficult weather conditions such as fog.

32X OPTICAL ZOOM

32x optical zoom with no change in camera resolution. With optical zoom the pixel

count remains the same, unlike with digital zoom.

CAMERA VERSIONS

TECHNICAL DATA

	STANDARD VERSIONS		FIBRE OPTIC VERSIONS		PoE++ VERSION
Product Code	EC-940-AFZ-HDI-04H	EC-940-AFZ-HDI-05H	EC-940-AFZ-HDF-04I	EC-940-AFZ-HDF-05I	EC-940-AFZ-HDI-06H
Highlight	Full HD IP	Full HD IP	Fibre optic port, Ex op is certified	Fibre optic port, Ex op is certified	Only one network cable necessary
Certifications	ATEX, IECEx, Zone 1, 21, 2, 22				
Product Type	1/2.8" MP Zoom Camera				
Resolution	1920 x 1080 (FULL HD)				
Temperature Range	-40 °C ... +65 °C -40 °F ... +149 °F	-55 °C ... +65 °C -67 °F ... +149 °F	-25 °C ... +55 °C -13 °F ... +131 °F	-25 °C ... +55 °C -13 °F ... +131 °F	-55 °C ... +65 °C -67 °F ... +149 °F
IP Class	IP66				
Enclosure	Electropolished Stainless Steel 316L (1.4404)				
Connection	Ex e Connection Chamber				
Power Supply	230 VAC nominal	24 VDC nominal	230 VAC nominal	24 VDC nominal	PoE++ with Extender
Zoom Lens	32x optical, 4.44 ~ 142.6 mm				
Min. Illumination	B/W: 0.03 Lux (1/30 sec, F 1.6, 50 IRE); Color: 0.3 Lux (1/30 sec, F1.6, 50 IRE)				
Viewing Angle	62.8° (Wide) ~ 2.23° (Tele)				

ACCESSORIES



Parapet Mounting Bracket EC-94x-AFZ



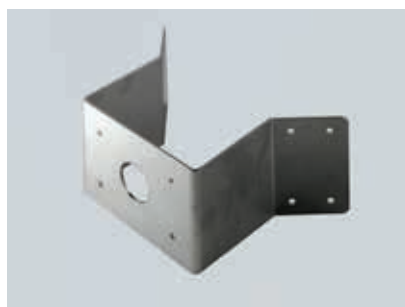
Wall Bracket EC-94x-AFZ



PoE++ Extender EC-940-HDI-06H



Pole Adapter Module EC-94x-AFZ



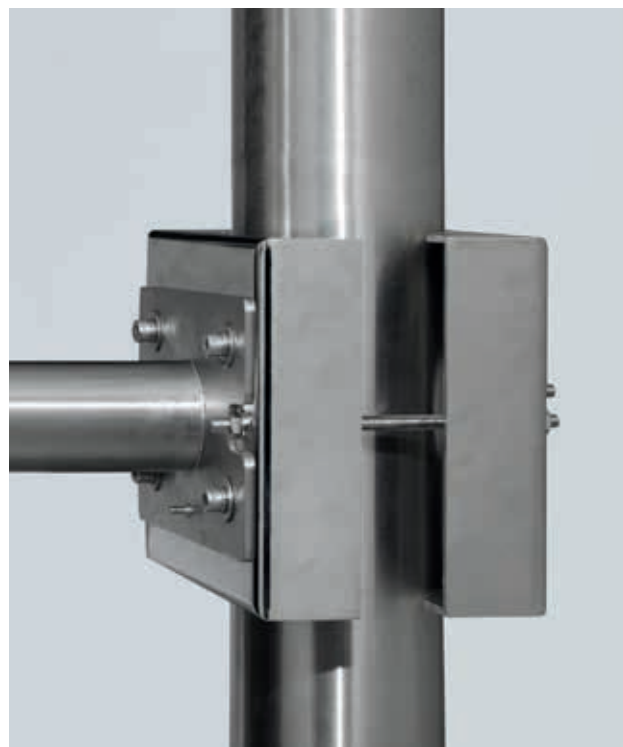
Corner Adapter Module EC-94x-AFZ



EC-940-AFZ Camera with Wall Bracket, Combined with Pole Adapter Module



Pan/Tilt Bracket Included



EC-94x-AFZ Pole Adapter Module

ONE STOP SUPPLIER

CCTV SYSTEMS – tailored to your individual hazardous area requirements

We develop CCTV system solutions tailored to the specific requirements of your plant to provide you with maximal overview of all areas and processes in hazardous areas. We provide not only hardware and software, but all relevant services such as project

design, project engineering, system configuration, documentation, FAT, commissioning, SAT, service and maintenance – except for installation. Our CCTV systems also adapt to existing CCTV systems.

An experienced project manager will be your primary contact and responsible throughout the entire project.

PERSONAL PROJECT MANAGEMENT

CCTV DESIGN

PROJECT ENGINEERING

SYSTEM CONFIGURATION

DOCUMENTATION

FACTORY ACCEPTANCE TEST (FAT)

COMMISSIONING / TRAINING

SITE ACCEPTANCE TEXT (SAT)

SERVICE / MAINTENANCE

WEB SERVICE



CCTV SYSTEM FINDER

Our CCTV SYSTEM FINDER serves as the basis for developing system solutions tailored to your specific requirements. Please answer these questions and describe your requirements – our CCTV experts will then develop a non-binding system solution or quote for you.

OUR CCTV EXPERTS



We cannot be everywhere, but we provide expert advice, whenever and wherever you need us. Using modern communication, video and chat functions allow us to present and discuss with you CCTV solutions tailored to your individual requirements.



Your personal CCTV expert provides you with extensive support, including training, commissioning, FAT, SAT, and system configuration – all from one single expert source.

HEADQUARTERS GERMANY

R. STAHL Camera Systems GmbH
Adolf-Grimme-Allee 8
50829 Cologne
Germany
T +49 221 76806 - 1200
F +49 221 76806 - 4200
office@stahl-camera.de
stahl-camera.de



STAHL

R. STAHL Camera Systems GmbH

Adolf-Grimme-Allee 8

50829 Cologne

Germany

T +49 221 76806 - 1200

F +49 221 76806 - 4200

stahl-camera.de